

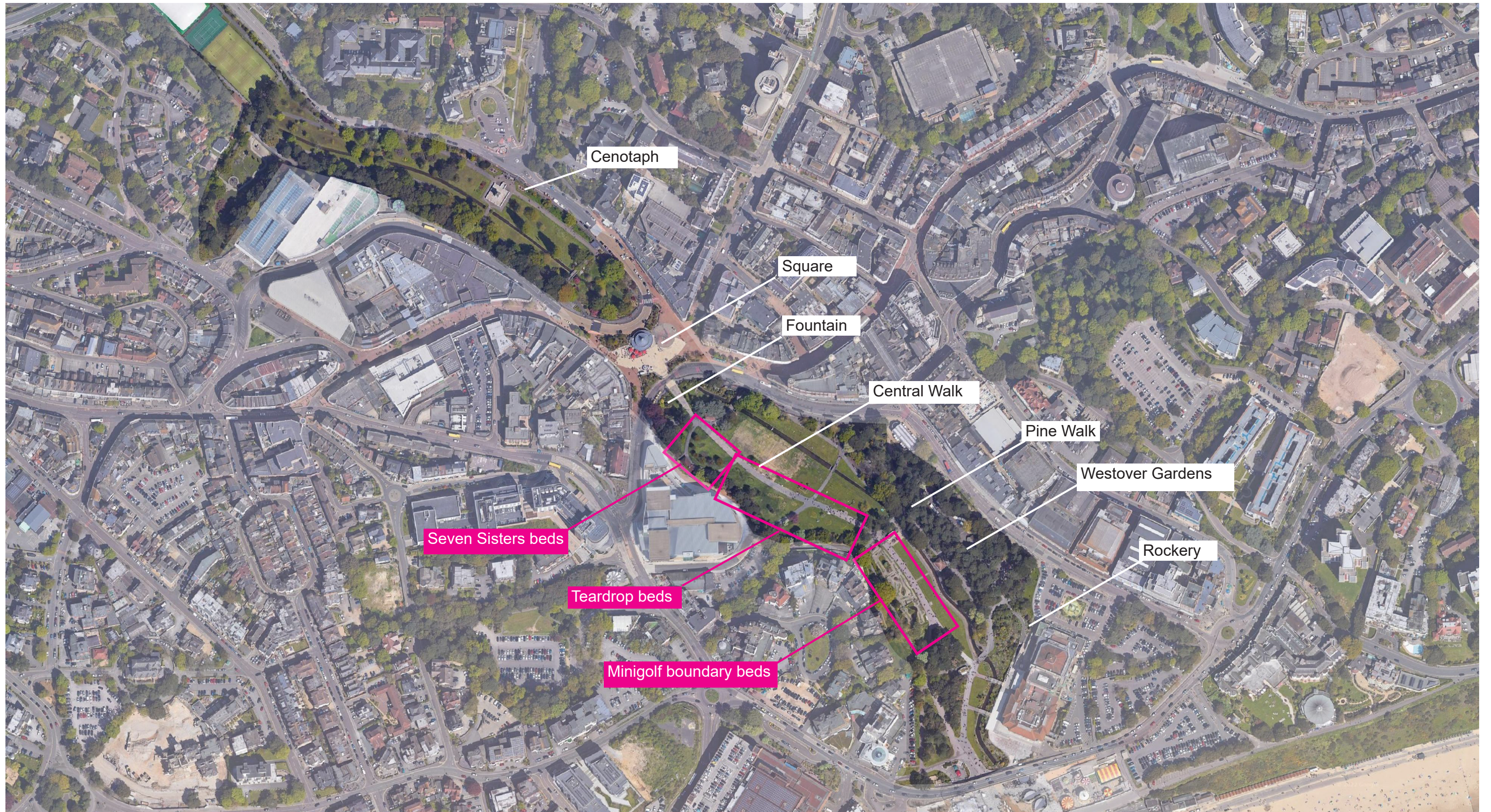
Bournemouth Lower Gardens

Bedding Replacement Planting Design

Concept, November 2022

Draft

Location Plan & Context

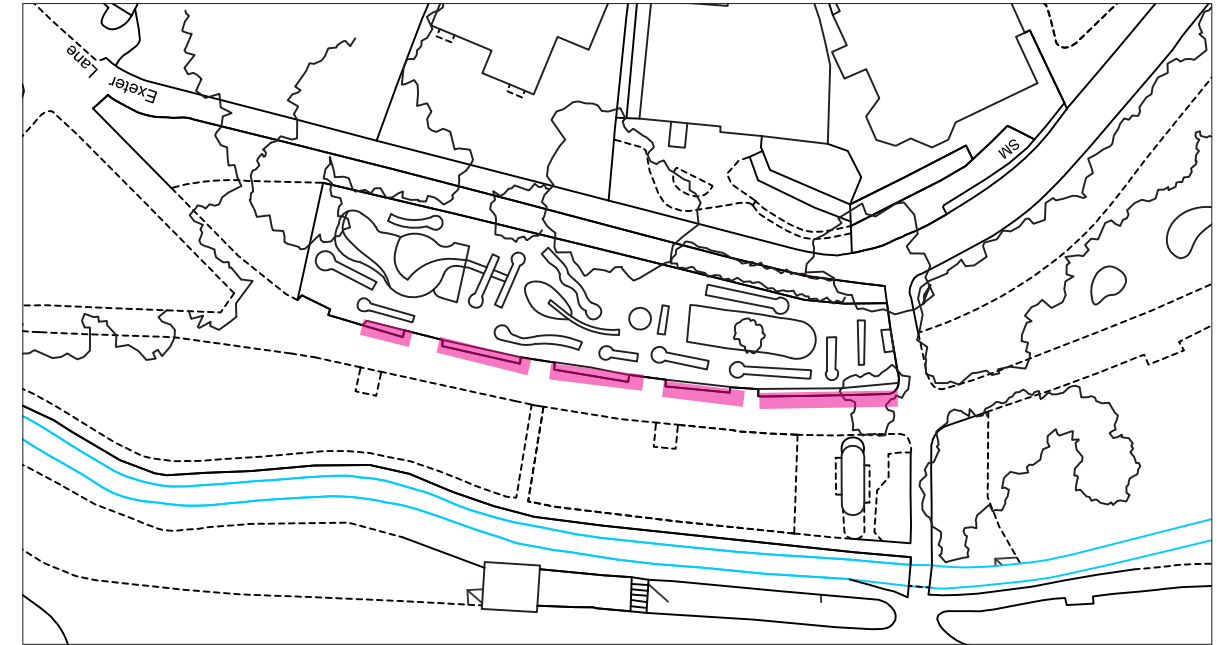


Key Design Principles

- To complement and celebrate the historic Grade II listed Victorian landscape of Bournemouth Gardens
- To create a harmonious planting scheme, informal in character, with bold and contrasting textures, movement and interest all year round
- To use colour to add accent but also as a narrative throughout
- To create a sense of delight and surprise with unusual flowers, foliage and scent
- To enhance biodiversity by using native species where possible, nectar-rich flowering plants and a layered vegetation structure
- To use plants that are robust, low maintenance and long-lived, future proofing for climate change

Minigolf Boundary Beds - Existing

- Growing conditions: dry, open, sunny
- Area with high footfall
- Beds are visually prominent along main thoroughfare and when seen from across the gardens
- Some existing naturalistic planting of perennials and grasses within the facility.
- Mature trees and ornamental shrubs frame the site and form a green backdrop.
- Open views/sightlines into the facility need to be maintained.



Location



View of beds behind fenceline

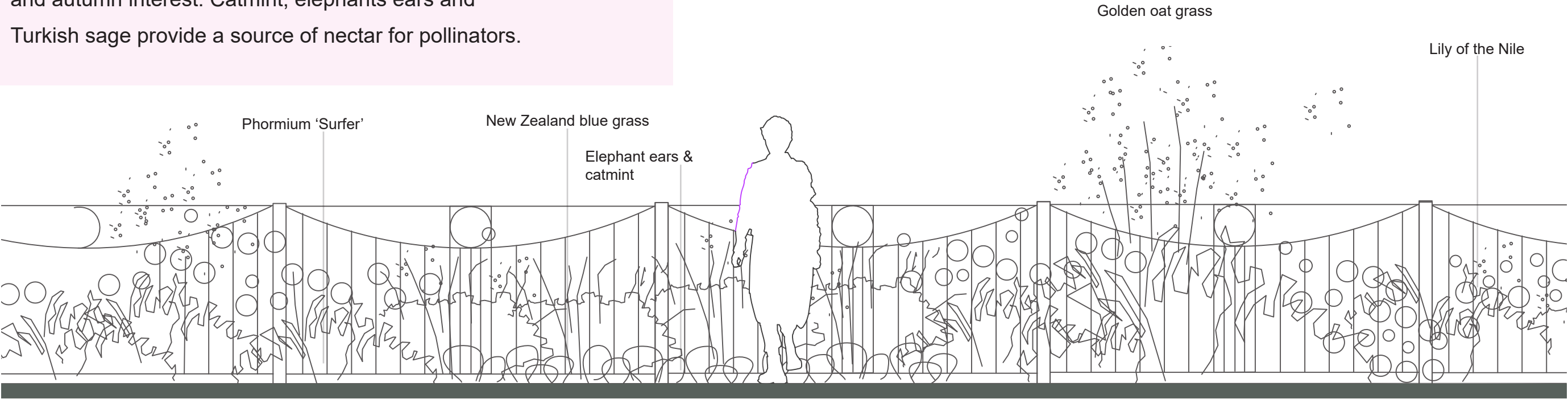


Existing planting within Mini-golf facility

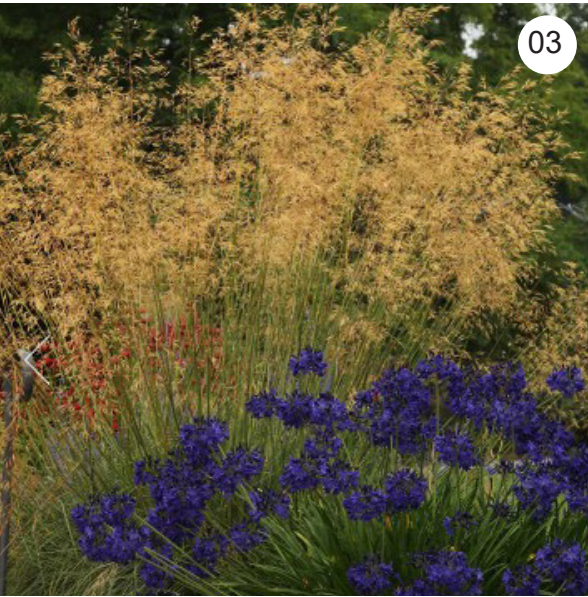
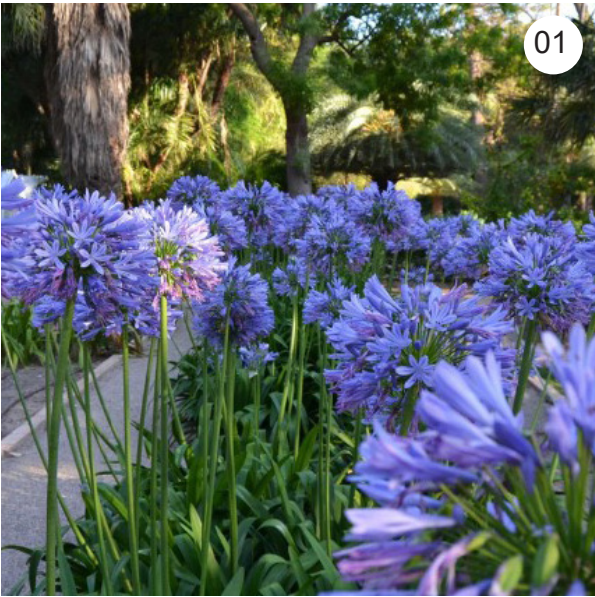
Minigolf Boundary Beds - Proposals

Proposals

Low planting consisting of evergreen grasses, phormium and agapanthus flowering in different shades of purple. The seed heads of the golden oat grass create summer and autumn interest. Catmint, elephants ears and Turkish sage provide a source of nectar for pollinators.



Elevation - Proposed



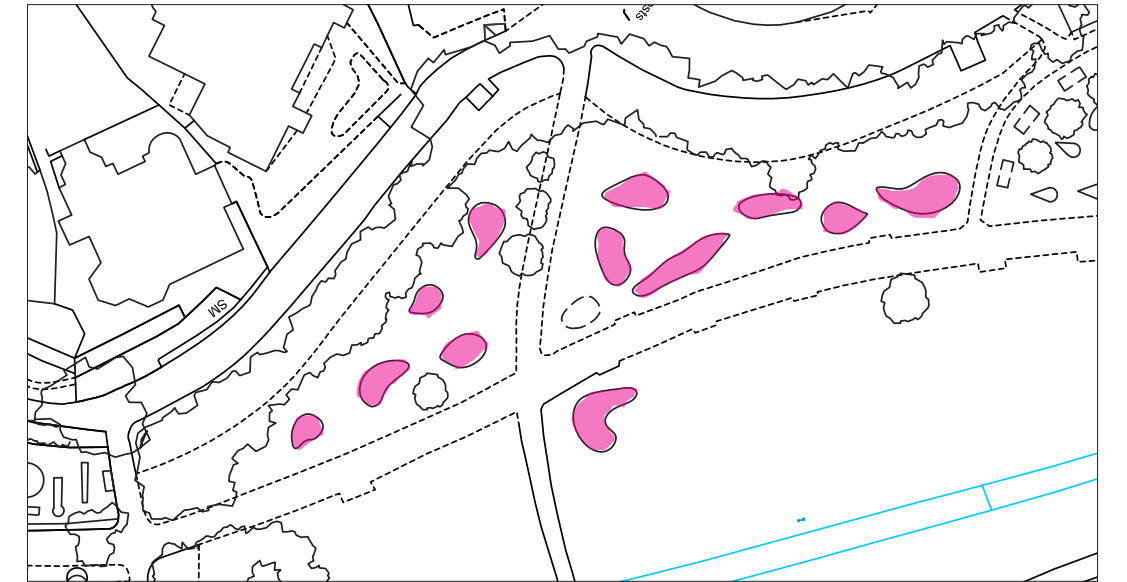
- 01** Agapanthus, evergreen cvs
Lily of the Nile
- 02** Phormium 'Surfer'
New Zealand flax
- 03** Stipa gigantea
Golden Oat Grass
- 04** Poa labillardierei
New Zealand Blue Grass
- 05** Nepeta 'Walker's Low'
Dwarf catmint

Plant Palette

Teardrop Beds - Existing

- Growing conditions: dry to damp, open
- Mature trees and shrubs on the western boundary and the neighbouring Odeon complex heavily shade the area during autumn and winter.
- The lawn between the beds is popular with people to gather, sit, rest and play.
- The planting has an exotic character with contrasting leaf shapes and colours - white vs black and red vs green.

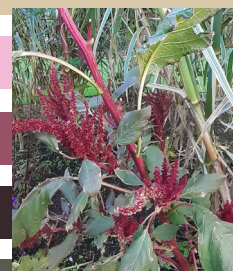
- Beds contain evergreen structure planting including windmill palm, phormiums, cordyline, ornamental bananas, castor oil plant and giant reed. The latter is particularly prominent.



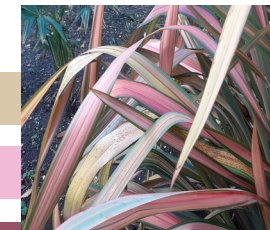
Dahlia



Windmill palm



Lamandra



Phormium



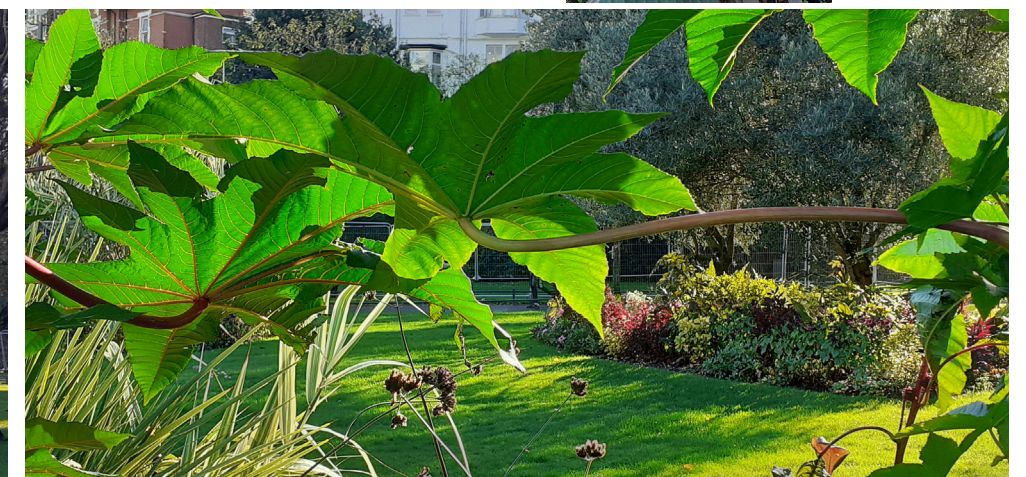
Giant Reed



Black phormium



Banana

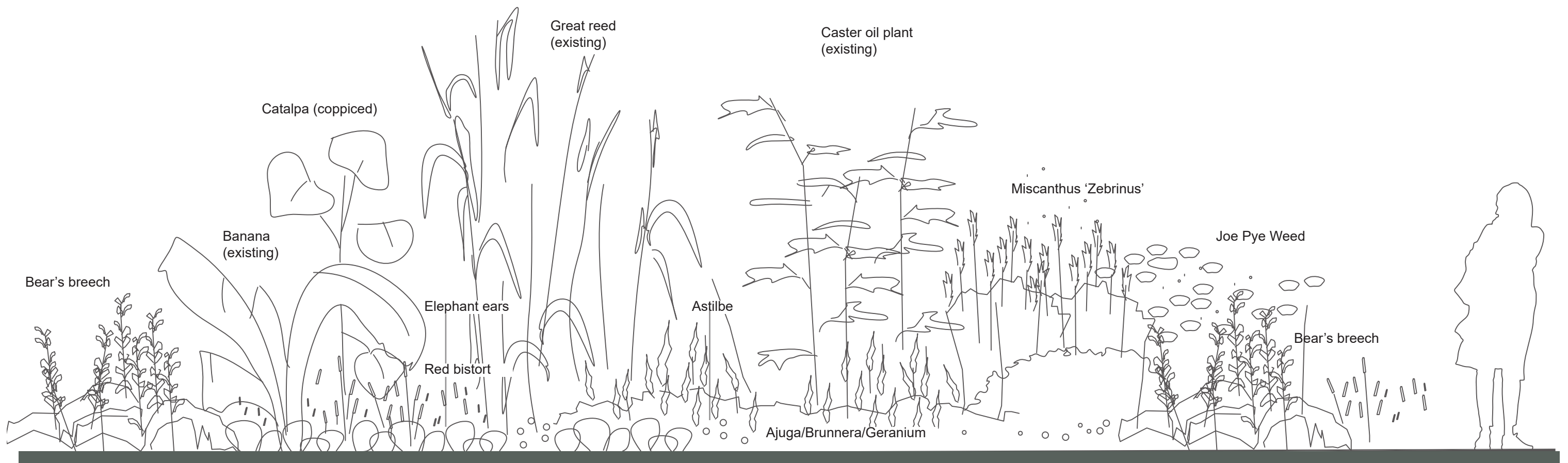


Existing Colours and Textures

Teardrop Beds - Proposals

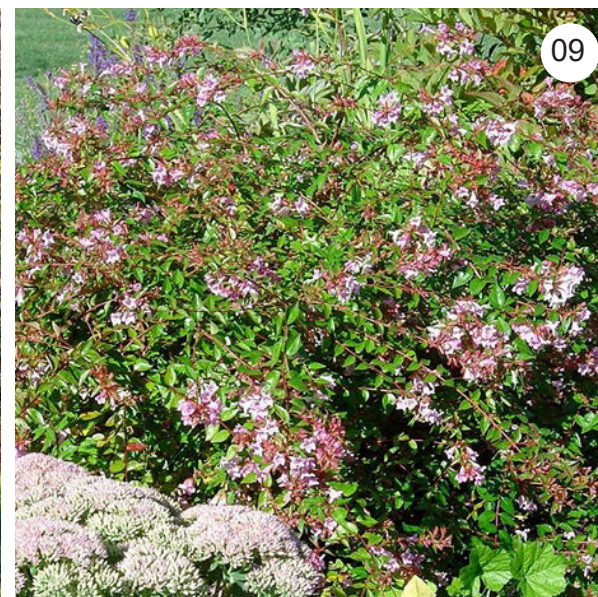
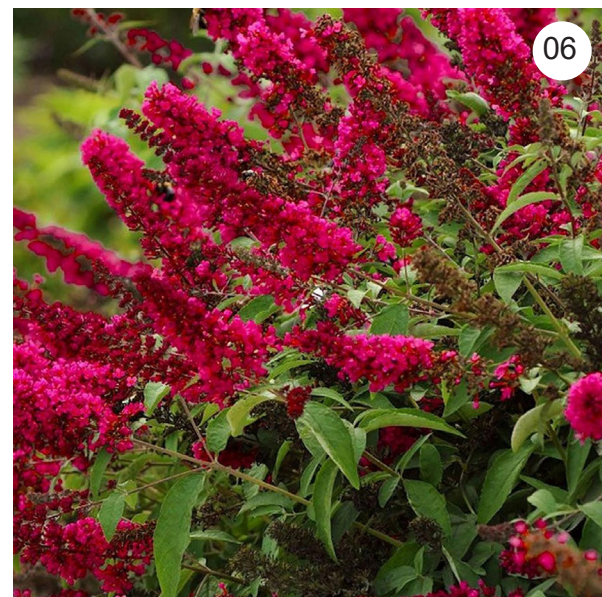
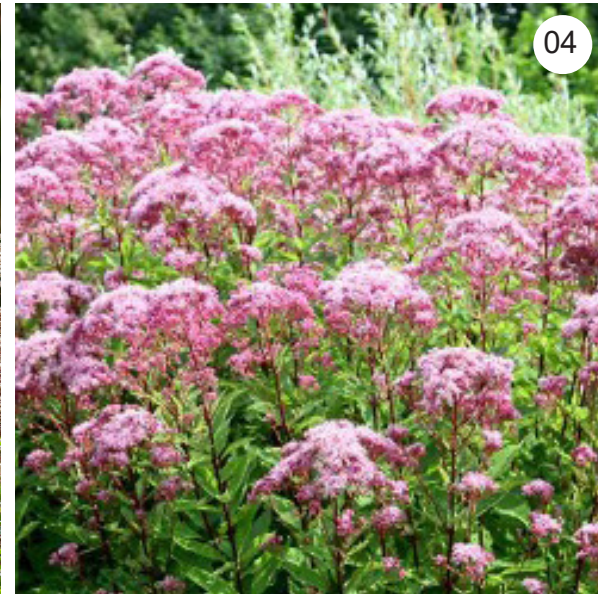
Proposals

- To strengthen the vegetation structure by adding ornamental shrubs.
- To build on the existing colour theme by replacing the bedding layer with plants that emulate the strong colour of annuals. This includes groundcovers and fillers with tones of reds and purples.
- To use strong red and yellow flowers for accent.
- To introduce grasses for their seasonal interest, texture and movement, including their seedheads in winter
- To add a carpet of flowering bulbs for early spring colour and groups of ferns for interest.
- To introduce a greater variety of plants to increase horticultural interest.



Teardrop Beds - Proposed

Structural Planting



01 *Phormium* cvs
New Zealand Flax

02 *Hydrangea paniculate*
'Limelight'

03 *Miscanthus sinensis* cvs*
Elephant grass

04 *Eupatorium maculatum**
Joe pie weed

05 *Cotinus* 'Grace'
Smoke bush

06 *Echium pininana*
'Red rocket'

07 *Melianthus major**
Great honey flower

08 *Mahonia x media* 'Charity'
Oregon grape

09 *Abelia grandiflora*
Glossy abelia

* Perennial or grass

Adding a great variety of structural plants with tones of pink, red and yellow

Teardrop Beds - Proposals

Plant Schedule

Species	Wildlife friendly*	Planting
Ajuga reptans 'Atropurpurea' <i>Dark purple bugle</i>	x	Groundcover: Groups of 15-20
Acanthus spinosa <i>Spiny bear's breech</i>		Filler: Groups of 5-10
Acanthus mollis <i>Bear's breech</i>		Filler: Groups of 5-10
Agapanthus africanus <i>Lily of the Nile</i>		Scatter: Groups of 3-5
Actaea racemosa <i>Bugbane</i>	x	Scatter
Amsonia 'Ice Blue' Blue star	x	Scatter
Anemone x hybrida 'Honorine Jobert' <i>Japanese anemone (White)</i>	x	Filler: Groups of 10-15
Anemone x hybrida 'Robustissima' <i>Japanese anemone (Pink)</i>	x	Filler: Groups of 10-15
Angelica gigas <i>Angelica</i>	x	Scatter
Astilbe 'Purpurlanze' <i>Astilbe</i>		Filler: Groups of 10-15
Bergenia cordifolia <i>Elephant ears</i>	x	Edging: Groups of 10-15
Briza media <i>Common quacking grass</i>		Edging: Groups of 5-10
Brunnera 'Jack Frost' <i>Siberian bugloss</i>		Groundcover: Groups of 15-20
Ceratostigma plumbaginoides <i>Hardy plumbago</i>	x	Edging/Filler: Groups of 5-10
Digitalis grandiflora <i>Large yellow foxgloves</i> <i>Perennial foxglove</i>	x	Scatter
Digitalis x mertonensis <i>Strawberry foxgloves</i> <i>Perennial foxglove</i>	x	Scatter
Echinops ritro 'Veitch's Blue' <i>Small globe thistle</i>	x	Scatter

Euphorbia chariacas 'Wulfenii' <i>Mediterranean spurge</i>	x	Scatter
Geranium sylvaticum <i>Wood cranesbill</i>	x	Groundcover: Groups of 15-20
Hellebore cvs <i>Christmas rose</i>	x	Groundcover: Groups of 15-20
Hemerocallis cvs <i>Day-lily</i>		Groundcover: Groups of 15-20
Kniphofia 'Ember glow' <i>Red-hot poker</i>		Scatter
Kniphofia 'Little Bee' <i>Red-hot poker</i>		Scatter
Liriope muscari <i>Turf-lily</i>	x	Edging and groundcover: Groups of 10-25
Macleaya cordata <i>Plume Poppy</i>		Specimen
Persicaria amplexicaulis 'Rosea' <i>Red bistort 'Rosea'</i>	x	Groundcover: Groups of 10-20
Persicaria amplexicaulis 'Firetail' <i>Red bistort 'Firetail'</i>	x	Groundcover: Groups of 10-15
Pennisetum 'Fairy Tails' <i>Fountain grass</i>		Filler and Edging: Groups 10 -15
Phlomis russeliana <i>Turkish Sage</i>	x	Filler and Edging: Groups of 5-10
Poa labillardierei <i>New Zealand blue grass</i>		Filler: Groups of 3-5
Rheum palmatum <i>Chinese rhubarb</i>		Specimen
Salvia microphylla 'Pink delight' <i>Baby sage</i>	x	Filler: Groups of 10-20
Stachys officinalis 'Hummelo' <i>Betony</i>	x	Groups of 5-10
Stipa gigantea <i>Golden oat grass</i>		Specimen
Stachys byzantina <i>Lamb's ears</i>	x	Groundcover/edging: Groups of 5-15

Top left to bottom right

<i>Brunnera 'Jack Frost'</i> <i>Siberian bugloss</i>	<i>Digitalis grandiflora</i> <i>Large yellow foxgloves</i>
<i>Anemone x hybrida 'Honorine Jobert'</i> <i>Japanese anemone (White)</i>	<i>Hellebore cvs</i> <i>Christmas rose</i>
<i>Liriope muscari</i> <i>Turf-lily</i>	<i>Ceratostigma plumb.</i> <i>Hardy plumbago</i>
<i>Geranium sylvaticum</i> <i>Wood cranesbill</i>	<i>Acanthus mollis</i> <i>Bear's breech</i>
<i>Stachys officinalis 'Hummelo'</i> <i>Betony</i>	<i>Angelica gigas</i> <i>Angelica</i>
<i>Euphorbia chariacas 'Wulfenii'</i> <i>Mediterranean spurge</i>	<i>Agapanthus africanus</i> <i>Lily of the Nile</i>
<i>Briza media</i> <i>Common quacking grass</i>	
<i>Salvia microphylla 'Pink delight'</i> <i>Baby sage</i>	
<i>Anemone x hybrida 'Robustissima'</i> <i>Japanese anemone (Pink)</i>	
<i>Astilbe 'Purpurlanze'</i> <i>Astilbe</i>	
<i>Bergenia cordifolia</i> <i>Elephant ears</i>	
<i>Persicaria amplexicaulis 'Firetail'</i> <i>Red bistort 'Firetail'</i>	
<i>Actaea racemosa</i> <i>Bugbane</i>	
<i>Digitalis grandiflora</i> <i>Large yellow foxgloves</i>	

* www.rhs.org.uk/science/conservation-biodiversity/wildlife/plants-for-pollinators
www.rhs.org.uk/science/conservation-biodiversity/plants-for-bugs

Perennials

Teardrop Beds - Proposed



Teardrop Beds - Proposals

Winter and Spring Interest



Left to right:

- Winter seedheads and stems
- Mahonia flowers in January
- Seedheads of elephant grass
- Evergreen Turkish sage and grasses



01 Eranthus hyemalis
Winter aconite

02 Narcissus pseudonarcissus
Native daffodiles

03 Osmunda regalis
Royal fern

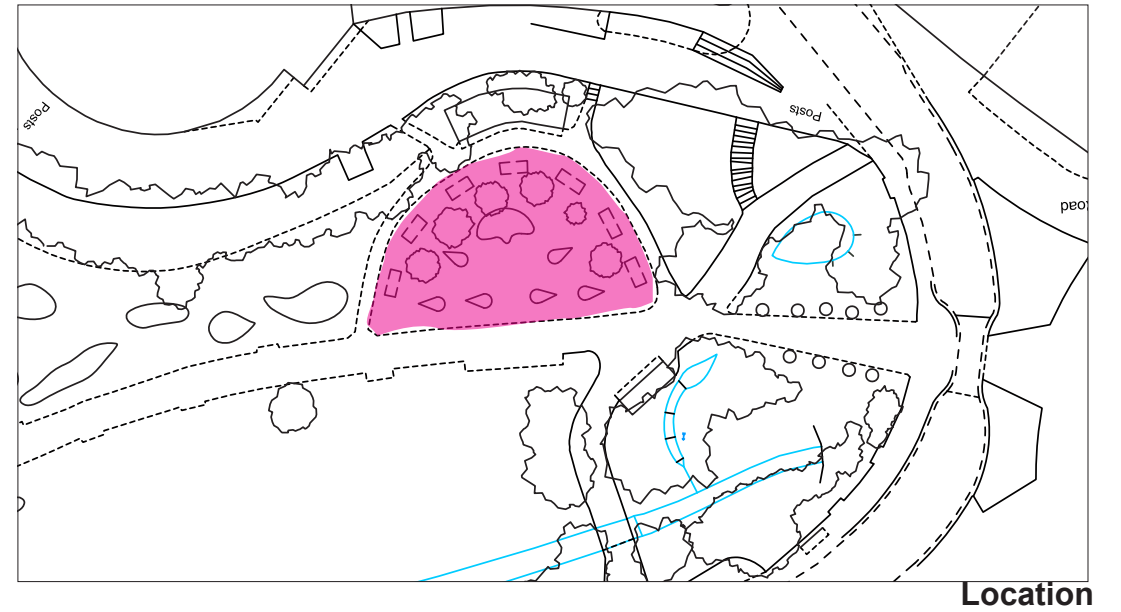
04 Helleborus cvs
Lenten rose

05 Anemone blanda
Winter windflower



Seven Sisters Beds - Existing

- Growing conditions: dry to damp, shaded
- A key focal point when entering the Gardens from the north and west.
- The design of the beds has changed over time to their current layout.'
- Planting needs to maintain views across the site and to the toilet block.

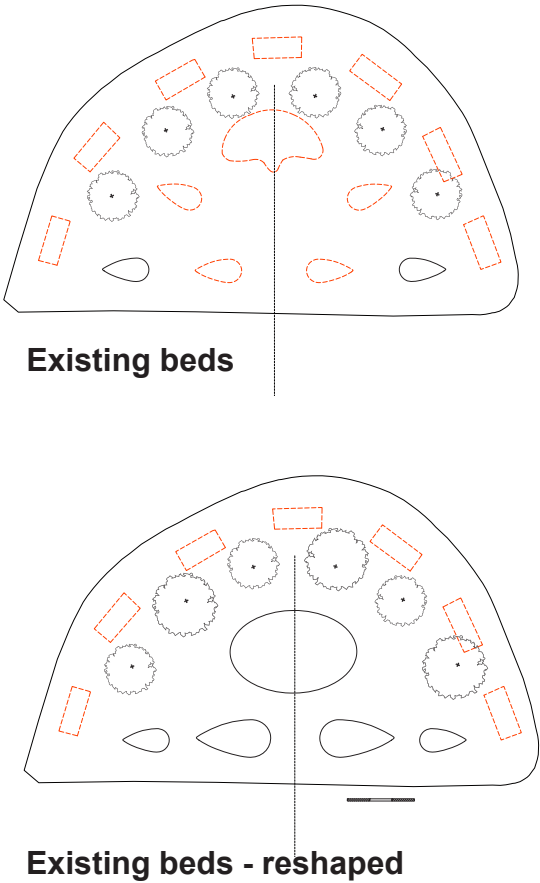
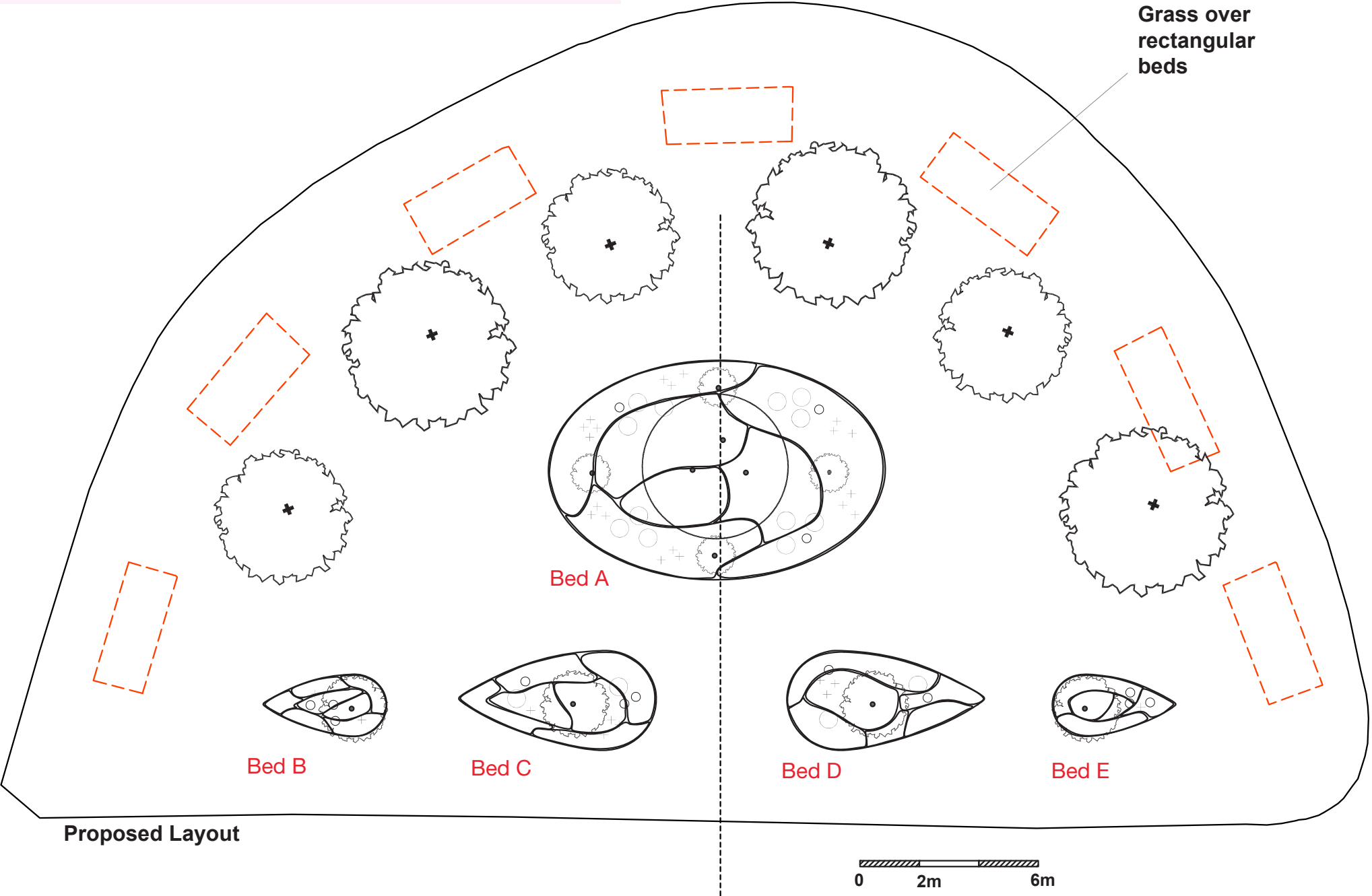


View from central path

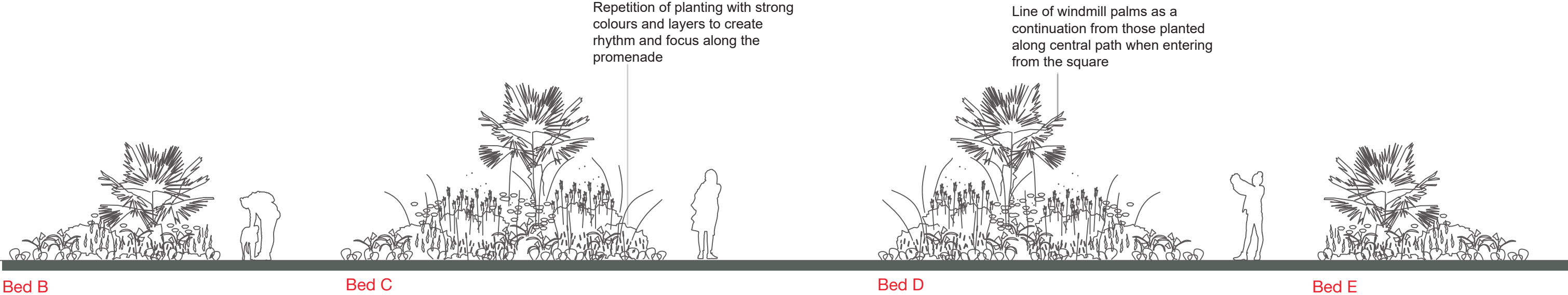
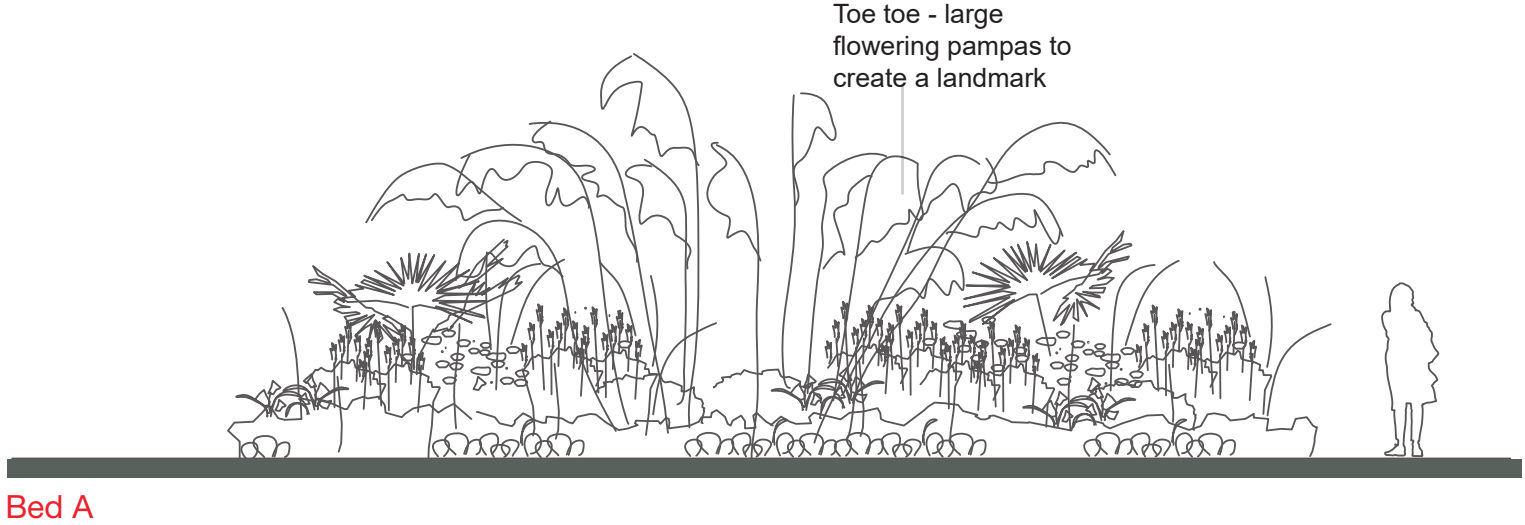
Seven Sisters Beds - Proposed

Proposals

To omit perimeter beds and reshape existing beds to create a layout with more intensely, bold planted areas. This will provide a key landmark and focal point to aid visitor orientation and create a greater sense of welcome when entering the Gardens.



Seven Sisters Beds - Proposals



Seven Sisters Beds - Proposals

Structural plants



Groundcovers & Fillers



Top row: <i>Structure/tall plants:</i>	01 Cortaderia richardii <i>Toe Toe</i>	03 Eupatorium 'Atropurpureum' <i>Joe Pie weed - low growig variety</i>	Bottom row: <i>Groundcovers and fillers:</i> Elephant ears, royal fern, turf liliy, salvia cvs, Japanese windflower, astilbe, Siberian buglass, daylily
	02 Miscanthus 'Kleine Silberspinne' <i>Elephant grass</i>	04 Trachycarpus fortunei <i>Windmill palm</i>	

